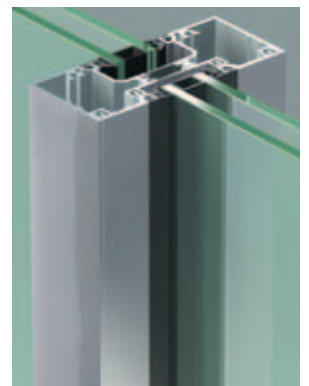


# **NC 115 SF**

## **Architectural Envelope Storefront System**



# NC 115 SF



## Features

- 6063 T5 Aluminum Alloy Frame
- Shop or On-Site Glazing
- Frame Depth 114 mm [ 4.5"]
- Captured Glazing
- Various Glass Size
- Weather Stripping: EPDM Gaskets
- Thermal Barrier: Polyamide
- Straight cut 90° with Fasteners
- Custom Color
- Painted or Anodizing Finish
- Dual Finish Available
- Durable Components

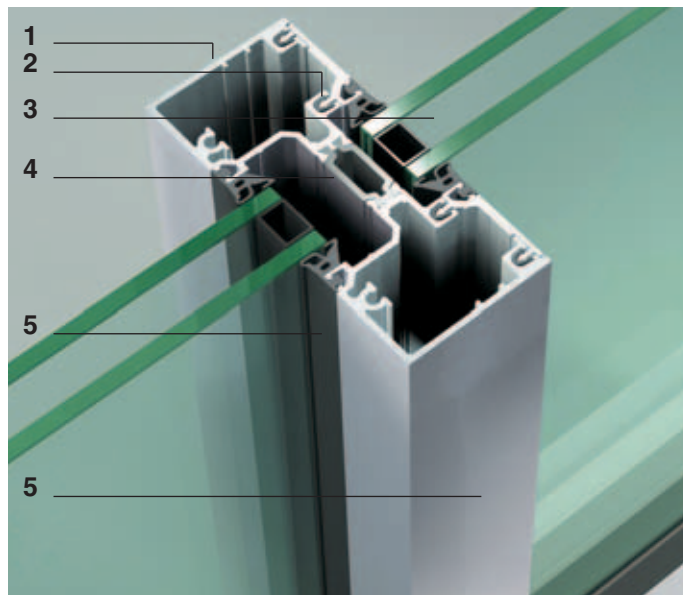
## Benefits

- Simple Installation
- Acoustic Insulation
- Thermal Insulation
- Inswing Outswing Door Solution Available
- Easy Maintenance
- Easy Glass Replacement

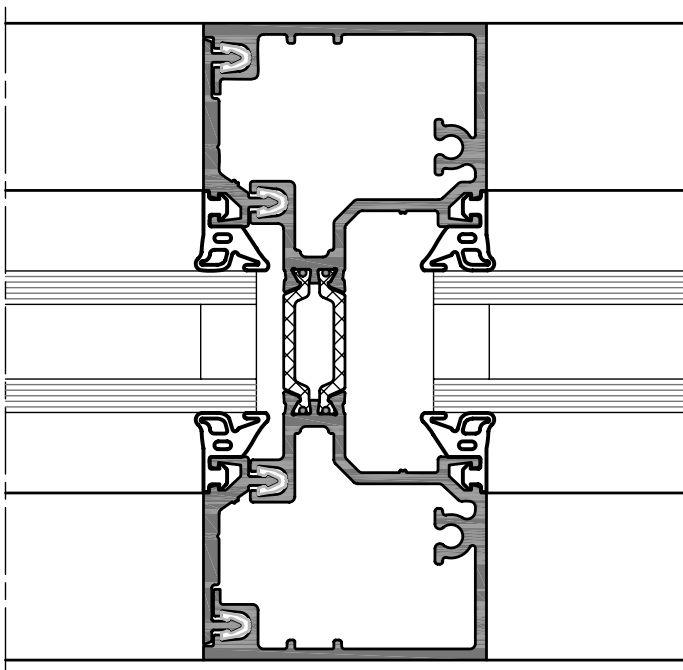
## Applications

- Storefronts
- Low-Rise Buildings

## Technology



1. Mullion
2. Cover
3. Insulating Glass Unit
4. Polyamidic Thermal Barrier
5. EPDM Gaskets
6. Painted or Anodized Finish



Horizontal section

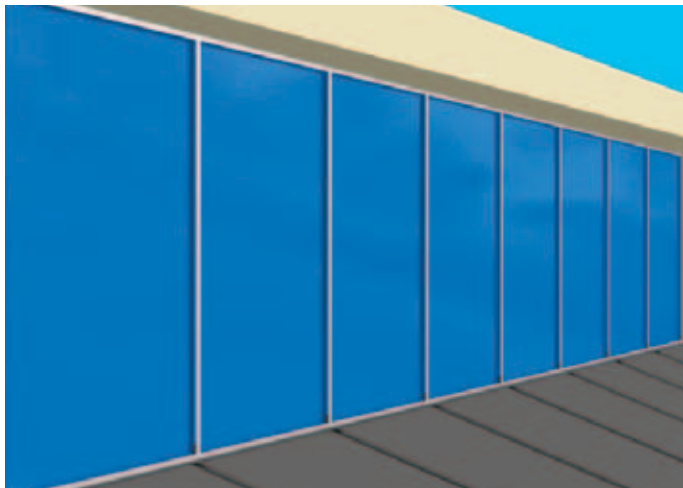
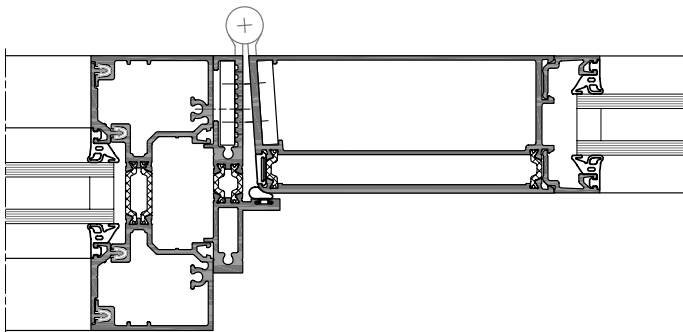
# Architectural Envelope Storefront System

## Opening Solutions



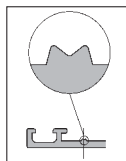
Single door opening outward    Single door opening inward    Double door opening outward    Double door opening inward

Thermally Insulated, Single and Double, Opening Inward and Outward Store Entrance Doors.



## Quality

METRA stands for quality and optimal performance. Only original METRA profiles and accessories can certify the highest performance. Original METRA products have an "M" mark on the interior surface.



METRA quality is certified by ISO 9001. METRA controls the entire process of production for the extrusions. Manufacturing and installation of final products are performed through a network of independent specialists.





METRA Systems  
1995 Industrial Blvd. - Laval, QC H7S 1P6, Canada  
Tel. +1 450 629 4260 - Fax +1 450 629 7313  
info@metrasystem.com  
www.metrasystem.com



**METRA**  
METRA S.p.A.  
Via Stacca, 1 - 25050 Rodengo Saiano (BS) Italy  
Tel. +39 030 6819.1 - Fax +39 030 6819 990  
metra@metra.it  
www.metra.eu

**METRA** prints on ecologically friendly paper  
and uses printing products with low  
environmental impact.



## METRA Products

Architectural Envelope

Entrances & Windows

Special Systems

Sliding Systems

Accessories

Printed in September 2009